

Products

CABINETS FITTING

Zion
communication



Zion Communication
Structured Cabling Cabinets



605 Data Racks



Standard

- Comply with ANSI/EIA RS-310-D、IEC60297-2、DIN41494;PART1; DIN41494;PART7

Material

- SPCC Cold Rolled Steel;
- Column: 1.5mm, others: 2.0mm

Colour

- 605 ■■■■■■ 0■■:RAL7035
- 605 ■■■■■■ 1■■:RAL9004

Loading Capacity

- Static loading: 250KG

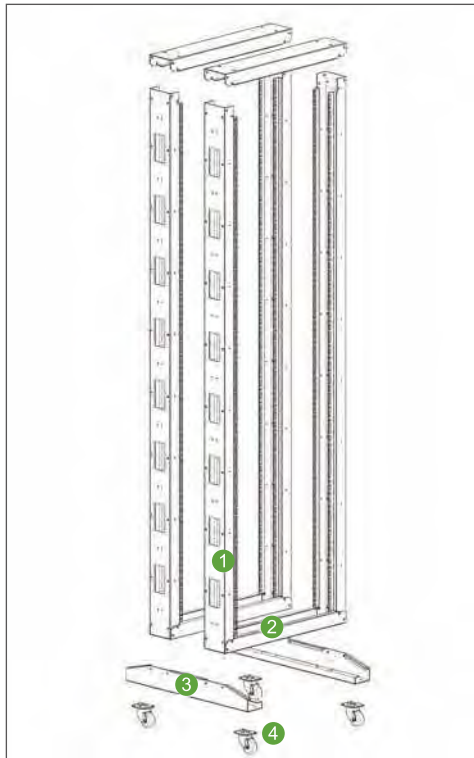
Feature

- Modular design, easily assemble and disassemble for delivery, low-cost.
- Various optional accessories according to requirements (cable management slot, removable working panel, etc.,)

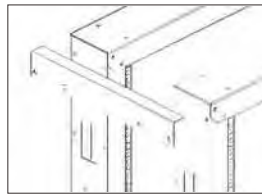


RACK

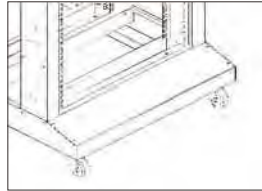
605 DATA RACKS



May Installs The Fitting



L bracket(customized)



Trim plate(customized)



Shelf
See page 160

Main Part

S/N	Specification	Qty	Material	Surface Finish	Remark
1	Column	4	SPCC t1.5	Powder coated	----
2	Plinth	4	SPCC t1.5	Powder coated	----
3	SupportCrossbeam	2	SPCC t2.0	Powder coated	----
4	2" heavy duty castor	4			----
A	M6 screw& nuts	20	Steel	Color zinc	40pcs for over 33U
B	Trox tooling	1	Steel	Black	----

Specification

Model No.	RU	Width (mm)	Depth(D)(mm)	Height(H)(mm)	Volume (CBM)
ZC605.6629.605DR	29	600	600	1422	1420*260*140
ZC605.6633.605DR	33	600	600	1600	1600*260*140
ZC605.6638.605DR	38	600	600	1822	1820*260*140
ZC605.6642.605DR	42	600	600	2000	2000*260*140
ZC605.6647.605DR	47	600	600	2222	2220*260*140

The packing information is for the flat pack and we suggest to use this flat pack to get significant cost saving.



606 Open Racks



Standard

- Comply with ANSI/EIA RS-310-D、IEC60297-2、DIN41494;PART1; DIN41494;PART7

Material

- SPCC Cold Rolled Steel;
- Column: 1.5mm, others: 2.0mm

Colour

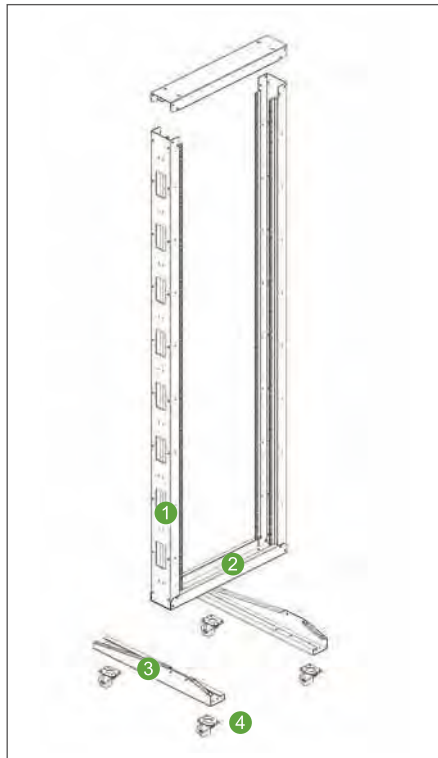
- 606 ■■■■■■ 0■■:RAL7035
- 606 ■■■■■■ 1■■:RAL9004

Loading Capacity

- Static loading: 150KG



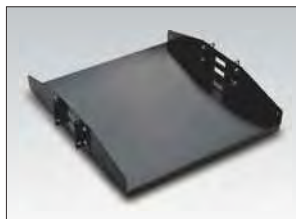
RACK 606 OPEN RACKS



Feature

- Modular design, easily assemble and disassemble for delivery, low-cost.
- Various optional accessories according to requirements(cable management slot, removable working panel, etc.).

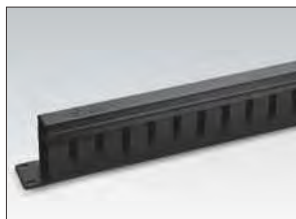
May Installs The Fitting



Double Sided Shelf
See page 159



Cantilever shelf
See page 159



cable management
See page 163

Main Part

S/N	Specification	Qty	Material	Surface Finish	Remark
1	Column	2	SPCC t1.5	Powder coated	----
2	Plinth	2	SPCC t2.0	Powder coated	----
3	SupportCrossbeam	2	SPCC t2.0	Powder coated	----
4	2" heavy duty castor	4			----
A	M6 screw& nuts	20	Steel	Color zinc	40pcs for over 33U
B	Trox tooling	1	Steel	Black	----

Specification

Model N o.	RU	Width (mm)	Depth(D)(mm)	Height(H)(mm)	Volume (CBM)
ZC606.6629.606OR	29	600	600	1422	1420*260*140
ZC606.6633.606OR	33	600	600	1600	1600*260*140
ZC606.6638.606OR	38	600	600	1822	1820*260*140
ZC606.6642.606OR	42	600	600	2000	2000*260*140
ZC606.6647.606OR	47	600	600	2222	2220*260*140



CABINETS FITTING WALL MOUNT BRACKET



19" WALL MOUNT BRACKETS

- Black powder painted steel construction.
- Wall mount 19" bracket.
- Standard spacing and threading.
- Front dimensions by standard.
- EIA Soft cable protection grommets.
- Color: BLACK / GREY.

Main part:

Model No.	Description
ZCWMB702202100	2U-6" DP
ZCWMB702203100	3U-6" DP
ZCWMB702204100	4U-6" DP
ZCWMB702204101	4U-12" DP
ZCWMB702207100	7U-12" DP



WALL MOUNT BRACKETS COVER

- Used for wall mount bracket.
- material: SPCC cold rolled steel.
- Color: BLACK / GREY.

Main part:

Model No.	Description
ZCWMB702200100-A	6" DP
ZCWMB702200100-B	12" DP





CABINETS FITTING PDU

PDU



- **Interface Compatibility :** the world modulation standard power outlet hole module, States could satisfy the different needs of customers with more output jacks and IEC output socket. apply to different countries import the equipment plugs. (Inter plugs vary from the standard, before buying Please check)
- **Achieve double-importation,** IEC socket input, Product front panel input, rear imported products ,imported products end form.
- **With a variety of specifications** GB, the British superscript, subscript Germany, the United States superscript, subscript India.
- **Optional 10A, 16A and industrial couplings,** and other specifications for the plug. Rackable installation of international standards: easy installation in standard 19-inch cabinets, racks, the only occupies 1U of rack space, Installation support level (standard 1 9-inch), the installation of the vertical (parallel with the Cabinet column installation), is also applicable to other occasions.
- **Convenient and reliable performance of the installation:** . 19-inch standardized design, installation is very simple. At least only two screws, PDU can be firmly fixed. Users may need to adjust products PDU installation of 180 degrees; coupled with a magnitude of L-plate bend can be achieved PDU products adjustment 90 degrees installation.
- **Multiple circuit protection function lightning and surge protection:** The biggest impact resistance Electricity : 20KA or higher; Limit voltage :≤500V or less; Lightning Protection, through professional testing centers detection, Fine-used equipment Surge Protection police protection : Current LED digital display and alarm functions with current monitoring of the entire process of filtering protection : protection with sophisticated filtering, ultra-stable output power of pure overload protection : bipolar provide overload protection, can effectively prevent overload generated by the issue.
- **Misoperation:** PDU dominated switch ON / OFF gate with protection to prevent the closure of the accident, while providing the option of a two-way.



Input connector type



Plug style	IEC60329
Parameter	16/32A 250VAC



Plug style	IEC320 C14(C20)
Parameter	10(16A) 250VAC



Plug style	BS1363
Parameter	13A 250VAC



Plug style	AS/NZS 3112
Parameter	10/15A 250VAC



Plug style	DIN49441
Parameter	16A 250VAC



Plug style	NEMA 5-15P
Parameter	15A 125VAC



CABINETS FITTING PDU

Output unit type



Style	AS/NZS 3112
Parameter	10(15A) 250VAC



Style	DIN49440
Parameter	16A 250VAC



Style	IEC320 C13(C19)
Parameter	10(16A) 250VAC



Style	IEC302C19
Parameter	13A 250VAC

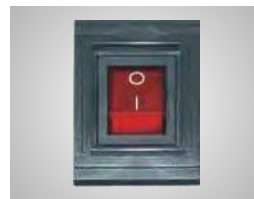


Style	BS1363(45°)
Parameter	13A 250VAC



Style	NEMA 5-15R
Parameter	15A 150VAC

Input connector type



Name	Master switch
------	---------------



Name	Master overload Protector & power indicator
------	---



Parameter	Mini circuit breaker(1~60A)
-----------	-----------------------------



Code	LY-A
Name	protective device



Code	LY-B
Name	protective device

Surge protective device

TUL-LY-A/B	Parameter
Rated voltage	250VAC 50/60Hz
Rated load current IR	16A
Max. power P _{MAX}	4000W
Max. Continuous operating voltage UC	320VAC
Measured limiting voltage Ur	<1000V
Nominal discharge current(8/20 μs)In	10KA
Voltage protection level Up	<1000V
Response time TA	<25nS
Protection mode	L-N L-PE N-PE
Earth indicator	Yellow LED
Lightning protection	Green LED
Power indicator	Red LED
Alternative filtration	Highly efficient
Insulation resistance RIS	>100MΩ
Fire resistance	Up to UL 94V-0
Environment temperature	-40~+70°C
Relative humidity	<=95%

Surge protective device:LY-B



- Red LED light, when working, means the Power had Unicom and filtering output.
- Green LED light, when disabled, means the failure of the lightning protection circuit.
- Yellow LED light, when working, means the absence of earth wire of the power supply system, which shall be case to contact electrician for his professional and grounding.



CABINETS FITTING

TC DIGITAL TEMPERATURE UNIT

TC Digital Temperature Unit

- 19" installation
- Simple structure, easy installation;
- Easy cabling & operation;
- Disturbing resistance, reliable running;
- 2-way output (IEC320 C13 and NEMA 5-15R).

Main part:

Model No.	Input connector type
ZC70180101	UK type(BS1363)
ZC70180102	German type(DIN49441)
ZC70180103	US type(NEMA 5-15P)

Technical parameters

- Power supply: 220VAC+10%/-15%, 50/60Hz.
- Temperature measuring range: -50°C ~ 99°C.
- Resolution: 1°C.
- Refrigeration output contact capacity: 10A/277VAC.
- Sensor error delay time: 1min.
- Safe level: 1P65.
- Operation humidity: 20~85% (no condensate).
- Power consumption: ≤ 3W.
- Temperature controlling range: -40°C ~ 50°C.
- Accuracy: -50°C ~ 70°C, ±1°C, ±1°C at others can drive single phase compressor ≤ 1/2HP.
- Sensor: NTC.
- OPERATION TEMPERATURE: -30°C ~ 75°C.

Front panel



Key-press function

Key-press	Normal mode	Parameter modification mode
SET	Check compressor protection time	Display current menu set value
SET...3seconds	Enter into parameter modification	
Rst	Check temperature exceeding value	Quit from parameter modification
▲	Temperature upper limits checking	Menu items go backwards
▼	Temperature lower limits checking	Menu items go forwards
SET+▲		Parameter values increase by degrees
SET+▼		Parameter values decrease by degrees



Key operation

- Check parameter set value :
Press ▲ and then loosen to display the set upper limit;
Press ▼ and then loosen ▼ to display the.

Modify parameter set value

- Press set for more than 3s to enter into parameter modifying status the last, display the last adjusted menu after electrified with parameter modifying indicator light on.
- Press ▲ or ▼ to go forward or backward the menu item; press set to display the current.

Parameter set value

- Press set and ◀ or ▶ simultaneously can adjust the current parameter set value; press set and ▶ simultaneously more than 1s will increase current parameter set value quickly; press set and ◀ simultaneously more than 1s will decrease current parameter set value quickly;
- Press rst or no key operation in 30s will save the modified parameter and return to normal temperature display status.

Restore the parameter setting

- When electrify the controller, first check the parameter setting, if parameter setting is wrong, LED display E1 with buzzer sound, at this time press Set will restore default parameter setting.
- Advise to reset the parameter.



CABINETS FITTING TC DIGITAL TEMPERATURE UNIT

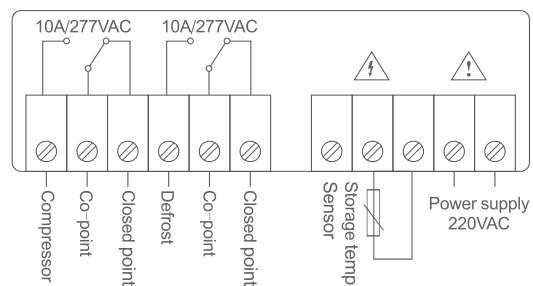
Control outprt

- **Compressor:**When the storage temp.Is higher than set temp.Upper limit,compressor starts,lower than set temp. Lower limit,compressor stops,When sensor errir, compressor works proportionably as on -15 minutes off-30 minutes.After electrified or compressor stops.Compressor restart-up is allowed after running out of compressor protection time.
- **Alarm:**While temp.exceeding value is not 0.LED blinkingly displays current temperature when storage temperature is higher than set temperature upper limip +exceeding temp value or lower than set lower limit-exceeding temp.value. When rumming out of the exceeding temp.limit alarm starts with after electrified.exceeding temp.limit alarm starts with buzzer sound,and alarm cancel when temperature return to normal temperature LED blinkingly Display E1 with buzzer sound when memorizer error;display E2 with buzzer sound when sensor error,Display HH when temp. Higher than 99°C and lower than 120°C。 Press any key to cancel alarm sound,but alarm status remains.

Indicator light description

Indicator light	Status	Function
Cool	Always on	Compressor cutput
Cool	Flashes	Compressor cutput delay
Set	Always on	Parameter modification status

Wire diagram



Key-press function

Item	Function	Fetting range	Unit	Default
F1	Upper limit	F2~+50	°C	-10
F2	Lower limit	-F40~F1	°C	-20
F3	Temperature calibration	-5~5	°C	0
F4	Compressor protection time	0~9	Min	3
F5	Exceeding temperatuer value	0~50, set value as 0 to cancel alam	°C	15
F6	Exceeding temperature alarm delay time	0~99	Min	20

Safety regulations

- **Danger:**Strictly distinguish the sensor down-lead,power wire and output relay interface from one another,prohibit wrong connections or overloading the relay. All connections should be modified under electricity cut-off.
- **Warning:**Prohibit to use the machine in water or under the environment of ower damp,high temperature,string electromagnetism interference ir string corrosion.
- **Caution:**The power supply should conform to one labeled on the machine,and ensure the stability of the power voltage. Sensor down-lead and power should be kept for a proper distance to avoid possible interferences.

Error code

Code	Reason	Status
E1	Memorizer error	Alarm,machine does not work
E2	Sensor error	Alarm.Compressor starts /stop proportionably
HH	Exceeding temp, display limit	



CABINETS FITTING COOLING

2/4 Fan Units

- Only for SHIP cabinet, enable ventilation and reliable operation. Easy-to-disassemble enable convenient operation.
- Full series of optional switch, can control fans singly.

Parameter

- Fan size:120X120X38, cable length: 1.9M
- Input frequency: 100~231V/50Hz
- Period: -10°C~+50°C
- Material: SPCC cold rolled steel
- Color: 70■■■■■0■■■: RAL7035
70■■■■■1■■■: RAL9004



Main part:

Model No.	Description	Input connector type
ZC70040211	2 fans	UK type(BS1363)
ZC70040212	2 fans	German type(DIN49441)
ZC70040213	2 fans	US type(NEMA 5-15P)
ZC70040411	4 fans	UK type(BS1363)
ZC70040412	4 fans	German type(DIN49441)
ZC70040413	4 fans	US type(NEMA 5-15P)

2/4 Fan Units With Thermostat

Only for SHIP cabinet, enable ventilation and reliable operation.
Easy-to-disassemble enable convenient operation.

Parameter

- large setting range: 0°C~+60°C
- small size
- High switching performance
- Fan size:120X120X38, Cable length:1.9m
- Input frequency:100~231V/50Hz
- Material:SPCC cold rolled steel
- Color: 70■■■■■0■■■: RAL7035
70■■■■■1■■■: RAL9004



Main part:

Model No.	Description	Input connector type
ZC70040211T	2 fans	UK type(BS1363)
ZC70040212T	2 fans	German type(DIN49441)
ZC70040213T	2 fans	US type(NEMA 5-15P)
ZC70040411T	4 fans	UK type(BS1363)
ZC70040412T	4 fans	German type(DIN49441)
ZC70040413T	4 fans	US type(NEMA 5-15P)



CABINETS FITTING COOLING

1U Fan Units

- 19" standard installation, 1U Switch control fans work.

Parameter

- Fan size: 120X120X38, cable length: 1.9M
- Input frequency: 100~231V/50Hz
- Period: -10°C~+50°C
- Material: SPCC cold rolled steel
- Color: 70■■■■■0■■■: RAL7035
70■■■■■1■■■: RAL9004



Main part:

Model No.	Description	Input connector type
ZC70040221	2 fans	UK type(BS1363)
ZC70040222	2 fans	German type(DIN49441)
ZC70040223	2 fans	US type(NEMA 5-15P)
ZC70040321	3 fans	UK type(BS1363)
ZC70040322	3 fans	German type(DIN49441)
ZC70040323	3 fans	US type(NEMA 5-15P)
ZC70040421	4 fans	UK type(BS1363)
ZC70040422	4 fans	German type(DIN49441)
ZC70040423	4 fans	US type(NEMA 5-15P)

3U Fan Units

- 19" standard installation, 3U

Parameter

- Fan size: 120X120X38, cable length: 1.9M
- Input frequency: 100~231V/50Hz
- Period: -10°C~+50°C
- Material: SPCC cold rolled steel
- Color: 70■■■■■0■■■: RAL7035
70■■■■■1■■■: RAL9004



Main part:

Model No.	Description	Input connector type
ZC70040231	2 fans	UK type(BS1363)
ZC70040232	2 fans	German type(DIN49441)
ZC70040233	2 fans	US type(NEMA 5-15P)
ZC70040331	3 fans	UK type(BS1363)
ZC70040332	3 fans	German type(DIN49441)
ZC70040333	3 fans	US type(NEMA 5-15P)



CABINETS FITTING SHELF

Cooling Fan

- For network cabinet, adjust inner temperature
Performance reference.

Parameter

- Size: 120X120X38
- Atmosphere runoff: 50CFM, Noise: 24.9 dB
- periode: -10°C~+50°C



Main part:

Model No.	Description	Input(v)	Axletree Type
ZCS701022000	AC fans	220	Oiliness Axletree

Cantilever Shelf Without Holes

- Used for 19 inch network cabinet and rack.

Parameter

- Material: SPCC cold rolled steel.
- Color: 70■■■■■0■■■: RAL7035
70■■■■■1■■■: RAL9004



Main part:

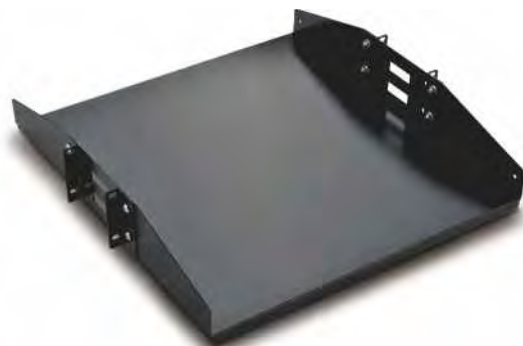
Model No.	Description	Capacity
ZCS70140207	2U-10" DP	22Kg.[48Lb]
ZCS70140208	2U-16" DP	22Kg.[48Lb]

Double Sided Shelf (2U)

- Used for 19" open rack, 2U height.

Parameter

- material: SPCC cold rolled steel.
- Color: 70■■■■■0■■■: RAL7035
70■■■■■1■■■: RAL9004



Main part:

Model No.	Description	Capacity
ZCS70140202	2U-19" DP	50Kg.[110Lb]



CABINETS FITTING SHELF

Keyboard

- Used for 19 inch network cabinet.
- Keyboard width is no more than 400MM.
- Sliding shelf could elongate to 260MM.

Parameter

- material: SPCC cold rolled steel.
- Color: 70■■■■■0■■■: RAL7035
70■■■■■1■■■: RAL9004

Main part:

Model No.	Description	Use
ZCS70033501	1 type	600~800MM cabinet
ZCS70033502	2 type	900~1100MM cabinet



Keyboard With Mouse Panel (2U)

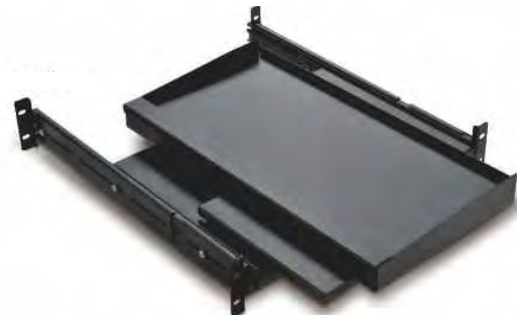
- Used for 19 inch network cabinet.
- Keyboard allowed maximum size 500X200MM.
- Keyboard and mouse are individually placed for convenient operation.

Parameter

- Material: SPCC cold rolled steel.
- Color: BLACK

Main part:

Model No.	Use
ZCS702102100	800~1000MM cabinet



Sliding Shelf (1U)

- Used for 19 inch network cabinet.

Parameter

- Static load capacity: 30 Kg [66Lb]
- Material: SPCC cold rolled steel
- Color: 70■■■■■0■■■: RAL7035
70■■■■■1■■■: RAL9004

Main part:

Model No.	Description	Shelf size MM		Use
		Width	Depth	
ZCS70023500	350 type	440	350	600~800MM cabinet
ZCS70025500	550 type	440	550	900~1100MM cabinet





CABINETS FITTING PANEL/BRACKETS

L Brackets

- Only for SHIP 19" cabinet and wall box, install from side.

Parameter

- Static load capacity: 15 Kg [33Lb]
- Material: SPCC cold rolled steel.
- Color: 70■■■■■0■■■: RAL7035
70■■■■■1■■■: RAL9004



Main part:

Model No.	Description	Length	Use
ZCPB70134500	45 type	300	450MM wall box
ZCPB70136601	66 type	450	600MM wall box
ZCPB70136000	60 type	320	600MM cabinet
ZCPB70138000	80 type	520	800MM cabinet
ZCPB70139000	90 type	620	900MM cabinet
ZCPB70131000	10 type	720	1000MM cabinet

Blanking Panel

- Compatible with 19 inch network cabinet, cover the blank position.

Parameter

- Material: SPCC cold rolled steel.
- Color: 70■■■■■0■■■: RAL7035
70■■■■■1■■■: RAL9004



Main part:

Model No.	Description	Size MM	
		Width	Depth
ZCPB70060100	1U	482	44
ZCPB70060200	2U	482	88
ZCPB70060300	3U	482	132.5
ZCPB70060400	4U	482	177



CABINETS FITTING SHELF

Fixed Shelf

- Only for SHIP cabinet, install from side.

Parameter

- Static load capacity: 90 Kg [198Lb]
- Material: SPCC 1.2 cold rolled steel
- Color: 70 ■■■■■0 ■■: RAL7035
70 ■■■■■1 ■■: RAL9004



Main part:

Model No.	Shelf size MM		Use
	Width	Depth	
ZCS70014500	485	300	450MM wall box
ZCS70016601	485	450	600MM wall box
ZCS70016000	485	350	600MM cabinet
ZCS70018000	485	550	800MM cabinet
ZCS70019000	485	620	900MM cabinet
ZCS70011000	485	720	1000MM cabinet

Cantilever Shelf With Holes

- Used for 19 inch network cabinet and rack.

Parameter

- material: SPCC cold rolled steel.
- Color: 70 ■■■■■0 ■■: RAL7035
70 ■■■■■1 ■■: RAL9004



Main part:

Model No.	Description	Capacity
ZCS70140102	1U-6" DP	5Kg.[11Lb]
ZCS70140101	1U-10" DP	10Kg.[22Lb]
ZCS70140205	2U-12" DP	22Kg.[48Lb]
ZCS70140204	2U-14" DP	22Kg.[48Lb]
ZCS70140201	2U-16" DP	22Kg.[48Lb]
ZCS70140206	2U-18" DP	22Kg.[48Lb]
ZCS70140301	3U-16" DP	36.3Kg.[80Lb]
ZCS70140302	3U-18" DP	36.3Kg.[80Lb]



STRUCTURE CABLING CABLE MANAGER

ZCCMJ606

1u cable manager 5 rings(metal).



ZCCMJ606B

2u cable manager 5 rings(metal).



ZCCMJ606-1

1u cable manager 4 rings(metal).



ZCCMJ606-1B

2u cable manager 4 rings(metal).





STRUCTURE CABLING CABLE MANAGER

ZCCMJ606-5V2H

Cable manager (Metal) 7 rings.



ZCCMJ606-4

Brush panel.



ZCCMJ606-2

Cable manager (Metal Cover).



ZCCMJ606-8





CABINETS FITTING PLINTH/DRAWER

Plinth

Parameter

- Only for SHIP 19" cabinet,
- Static load capacity: 1000 Kg.[2200Lb]
- Material: SPCC cold rolled steel
- Color:70■■■■■0■■■:RAL7035
70■■■■■1■■■:RAL9004



Main part:

Model No.	Shelf size MM			Use
	Width	Depth	Height	
ZCP70226610	600	600	100	601 cabinet
ZCP70226810	600	800	100	601 cabinet
ZCP70226910	600	900	100	601 cabinet
ZCP70226010	600	1000	100	601 cabinet
ZCP70228610	800	600	100	601 cabinet
ZCP70228810	800	800	100	601 cabinet
ZCP 70226611	600	600	100	PE cabinet
ZCP 70226811	600	800	100	PE cabinet
ZCP 70226911	600	900	100	PE cabinet
ZCP 70226011	600	1000	100	PE cabinet
ZCP 70228611	800	600	100	PE cabinet
ZCP 70228811	800	800	100	PE cabinet

Drawer

Parameter

- Used for 19 inch network cabinet and rack.
- Static load capacity:35kg
- Sliding shelf could elongate to 450MM
- material: SPCC cold rolled steel
- Color:70■■■■■0■■■:RAL7035
70■■■■■1■■■:RAL9004



Main part:

Model No.	Description
ZCP70230200	2U-18" DP
ZCP70230300	3U-18" DP

● GLOBAL MARKET



For more information
please visit us at:
www.zion-communication.com



■ China - Head office

EMAIL: info@zion-communication.com
TEL: +86 571 63804414
FAX: +86 571 63804424
ADD: NO.68, HuaQiao Road, JinCheng Street, LinAn,
ZheJiang, China 311300